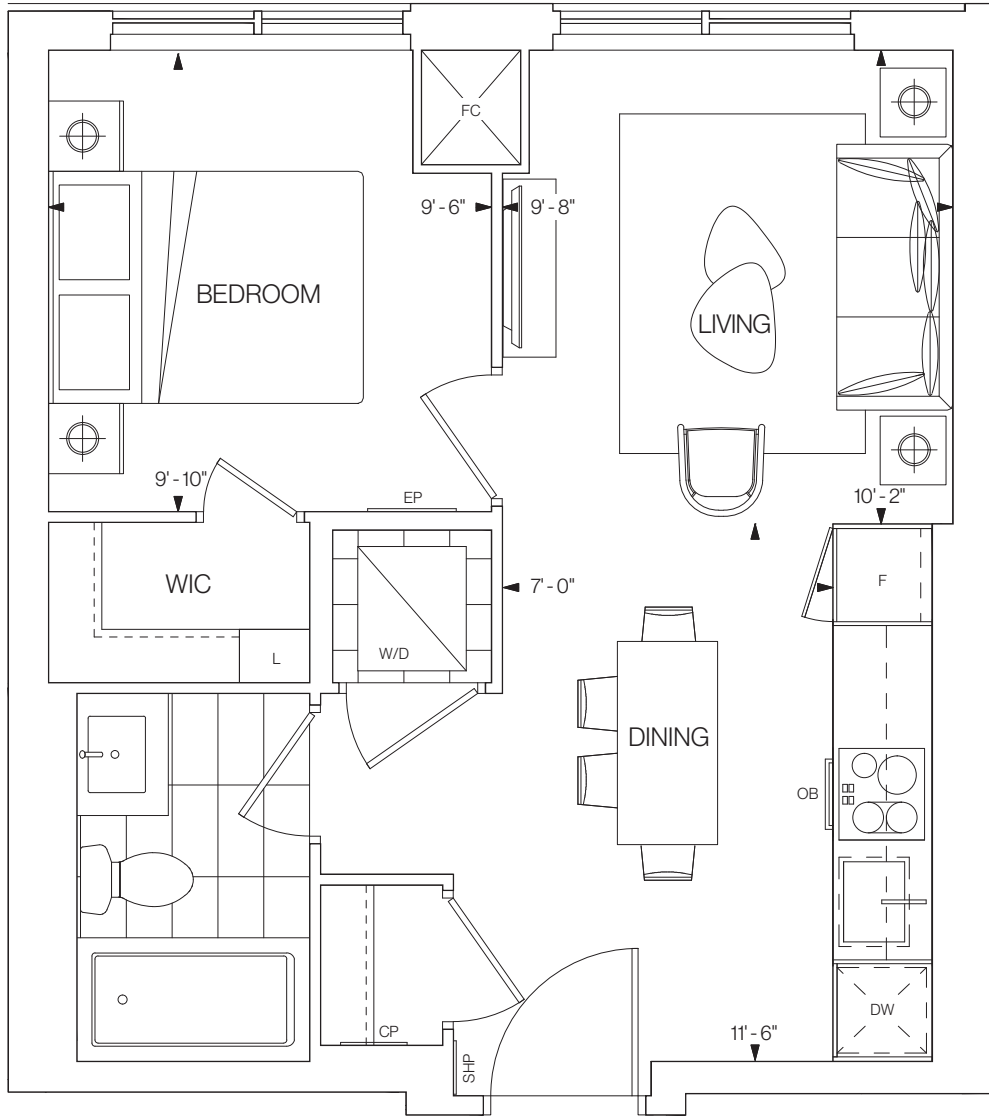


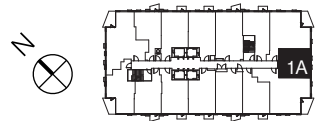
WESTERLY 2



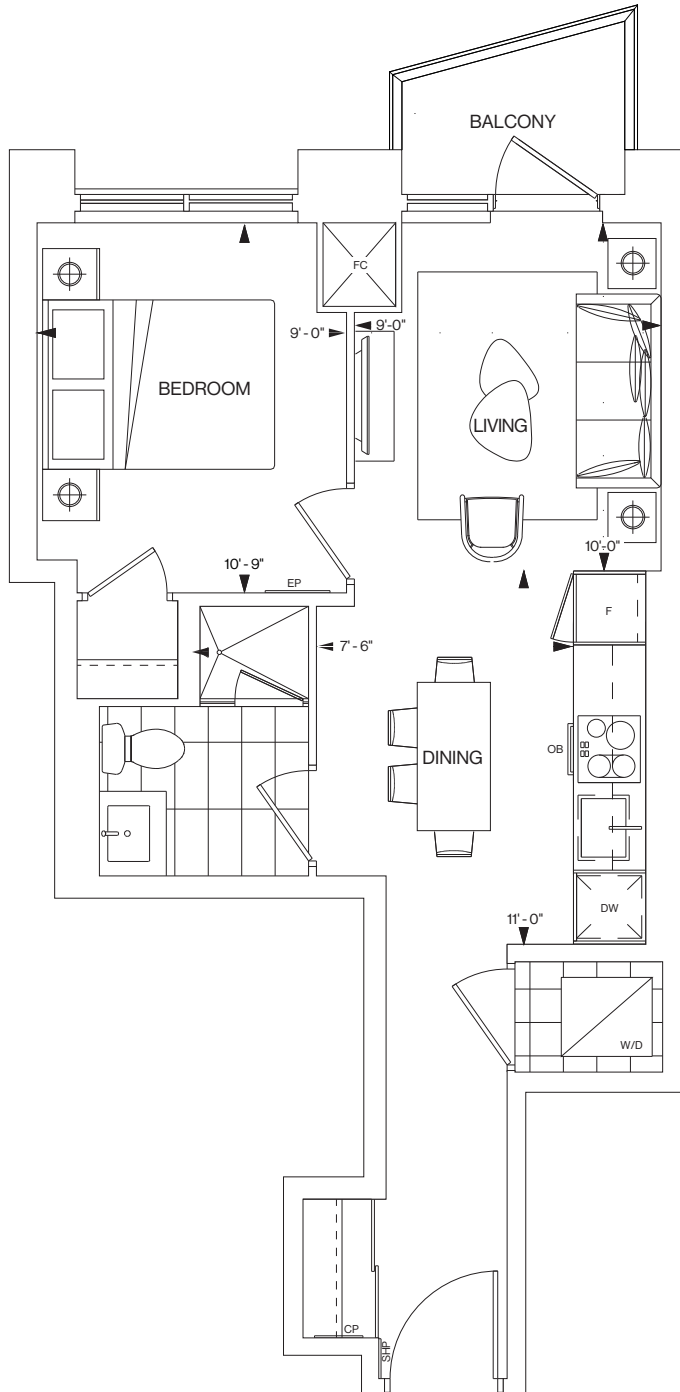
1A

478 SQ.FT.
1 BEDROOM 1 BATHROOM
SOUTH FACING

FLOORS 6-20



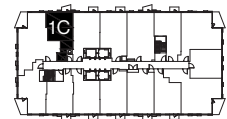
WESTERLY 2



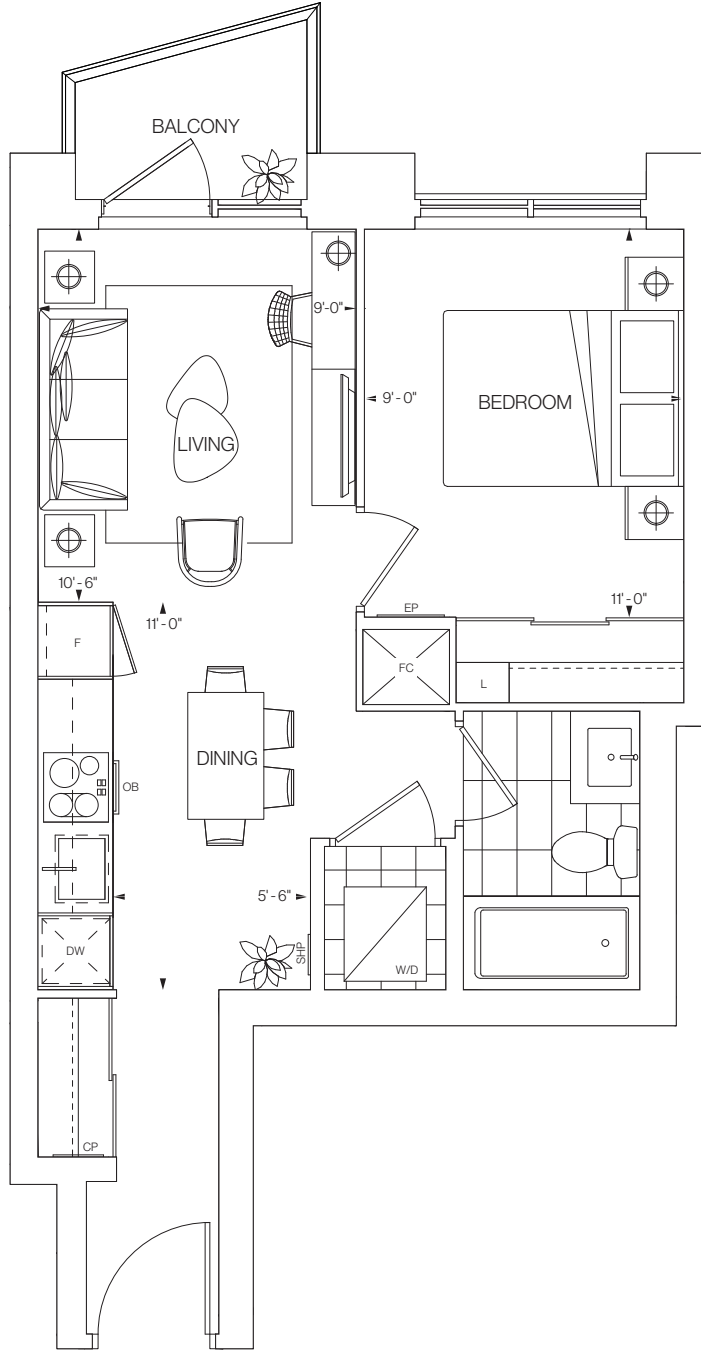
1C

493 SQ.FT.
1 BEDROOM 1 BATHROOM
EAST FACING

FLOORS 6-23



WESTERLY 2



1D

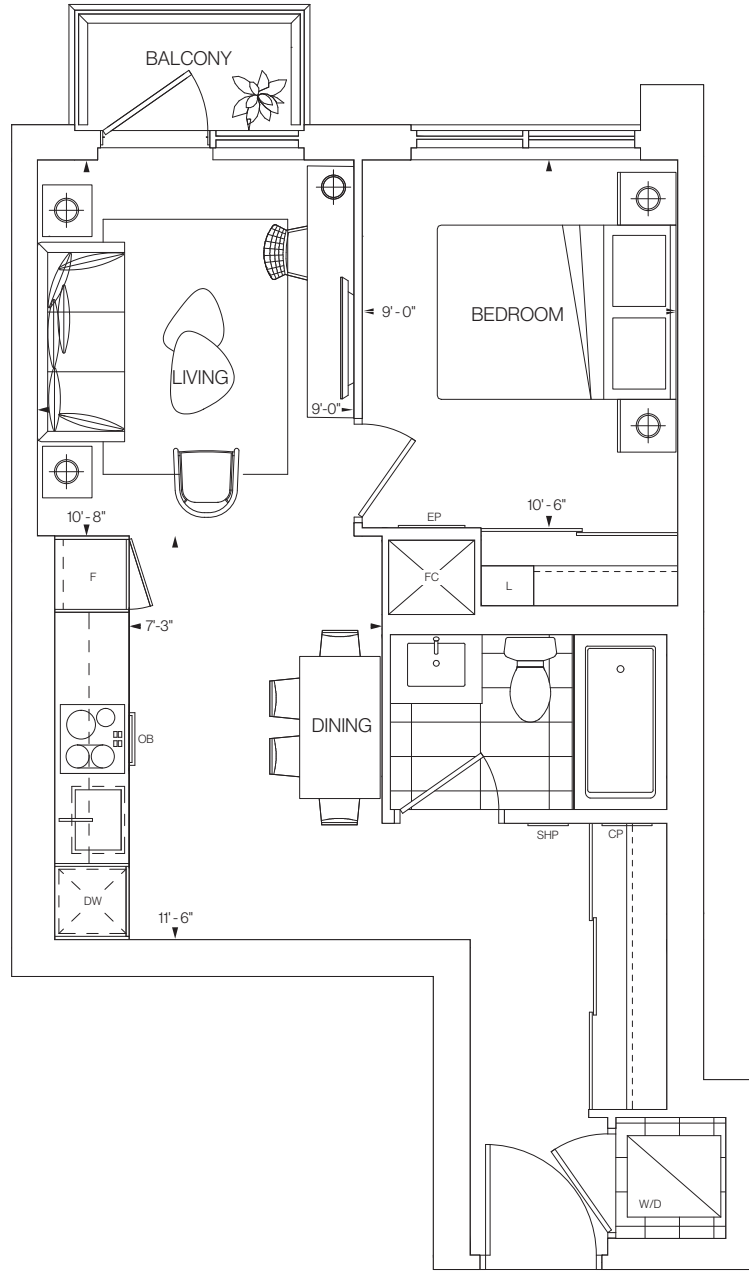
509 SQ.FT.
1 BEDROOM 1 BATHROOM
WEST FACING

FLOORS 6-20



©Tridel 2021. ®Tridel, "D" design, Tridel Built for Life and Tridel Built for Life Design are registered Trademarks of Tridel Corporation. Project names and logos are Trademarks of their respective owners. All rights reserved. Buildings and views not to scale. All dimensions are approximate and subject to normal construction variances. Dimensions may exceed the usable floor area. Sizes and specifications subject to change without notice. Actual usable floor space may vary from the stated floor area. Furniture is displayed for illustration purposes only and does not necessarily reflect the electrical plan for the suite. Suites are sold unfurnished. Balcony, terrace and façade variations may apply, contact a sales representative for further details. Illustrations are artist's concept only. Prices and specifications subject to change without notice. E.&O.E. October 2021.

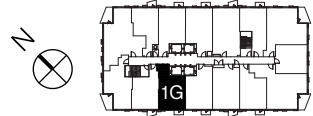
WESTERLY 2



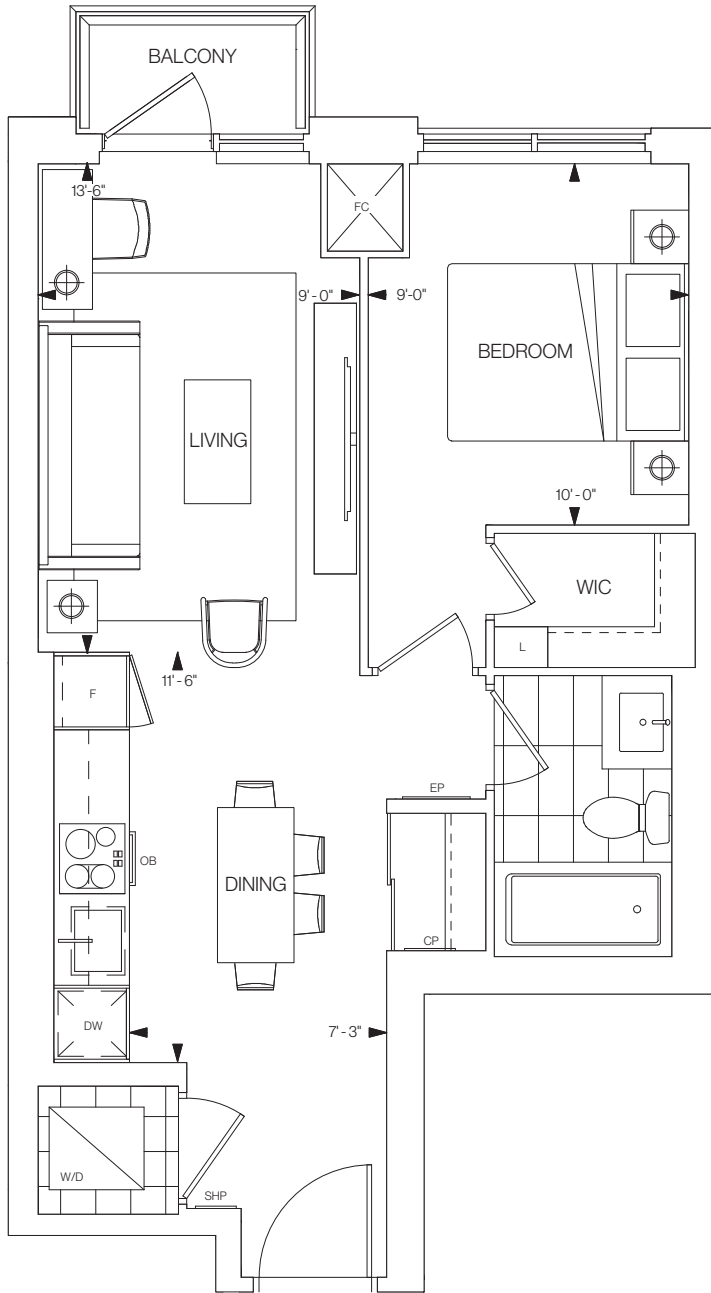
1G

535 SQ.FT.
1 BEDROOM 1 BATHROOM
WEST FACING

FLOORS 6-20



WESTERLY 2

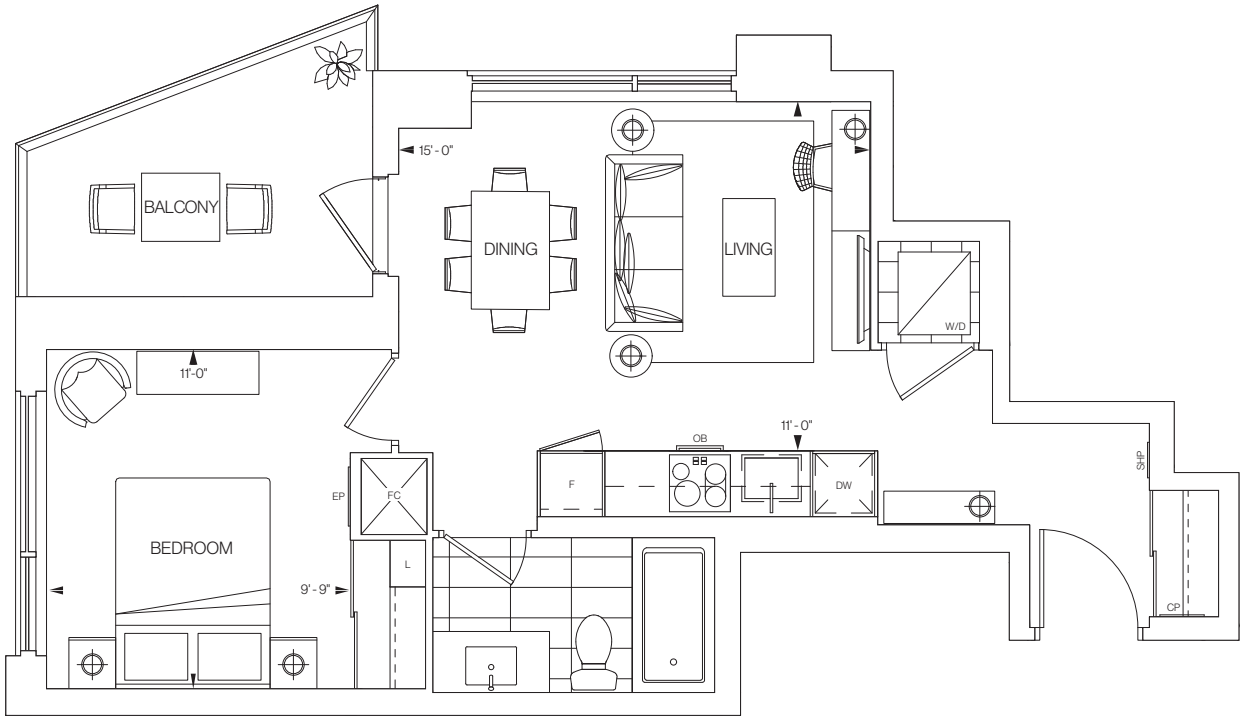


1H

559 SQ.FT.
1 BEDROOM 1 BATHROOM
WEST FACING



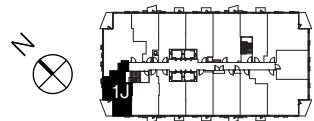
WESTERLY 2



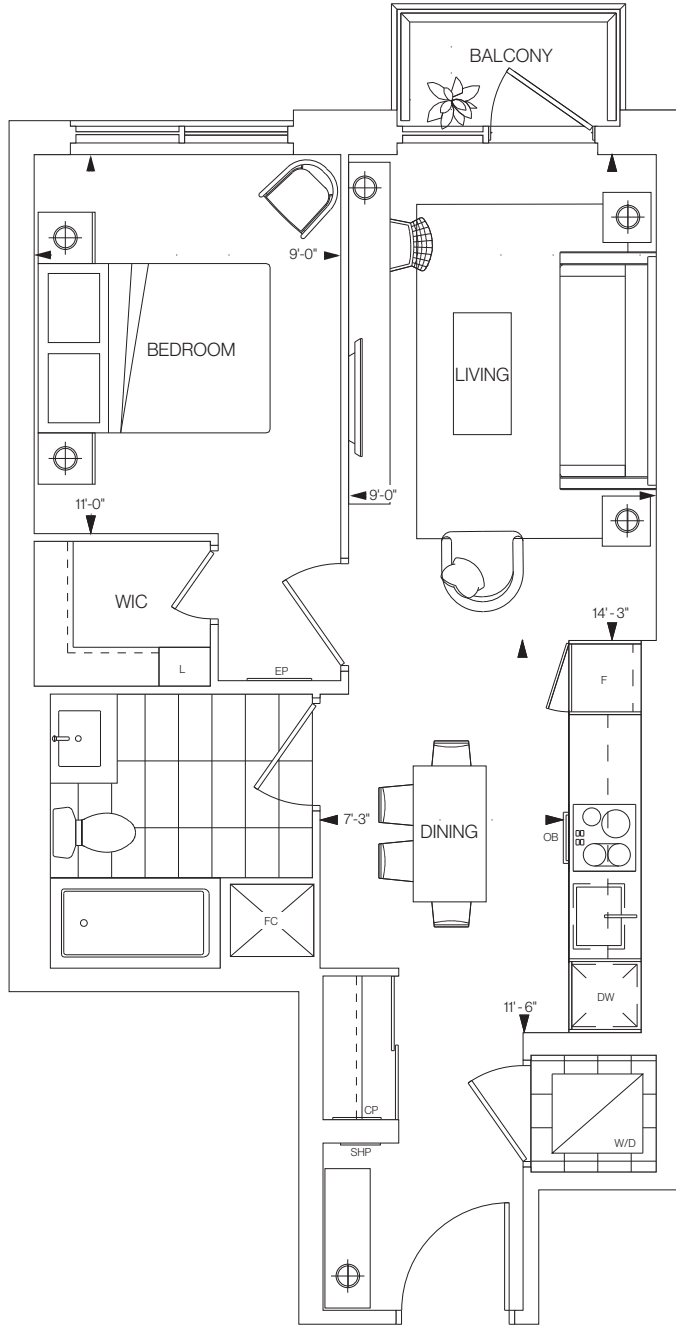
1J

567 SQ.FT.
1 BEDROOM 1 BATHROOM
NORTHWEST FACING

FLOORS 6-20



WESTERLY 2

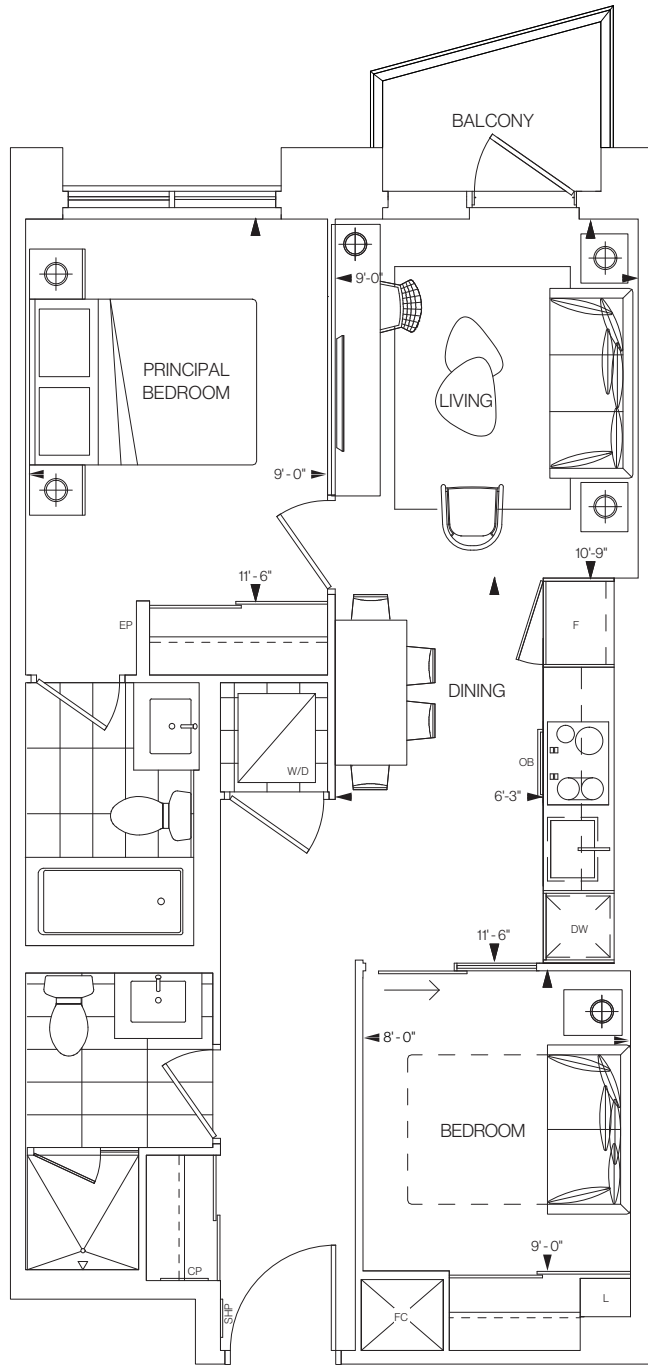


1L

595 SQ.FT.
1 BEDROOM 1 BATHROOM
EAST FACING



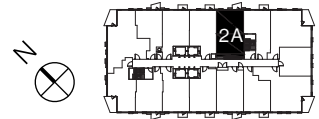
WESTERLY 2



2A

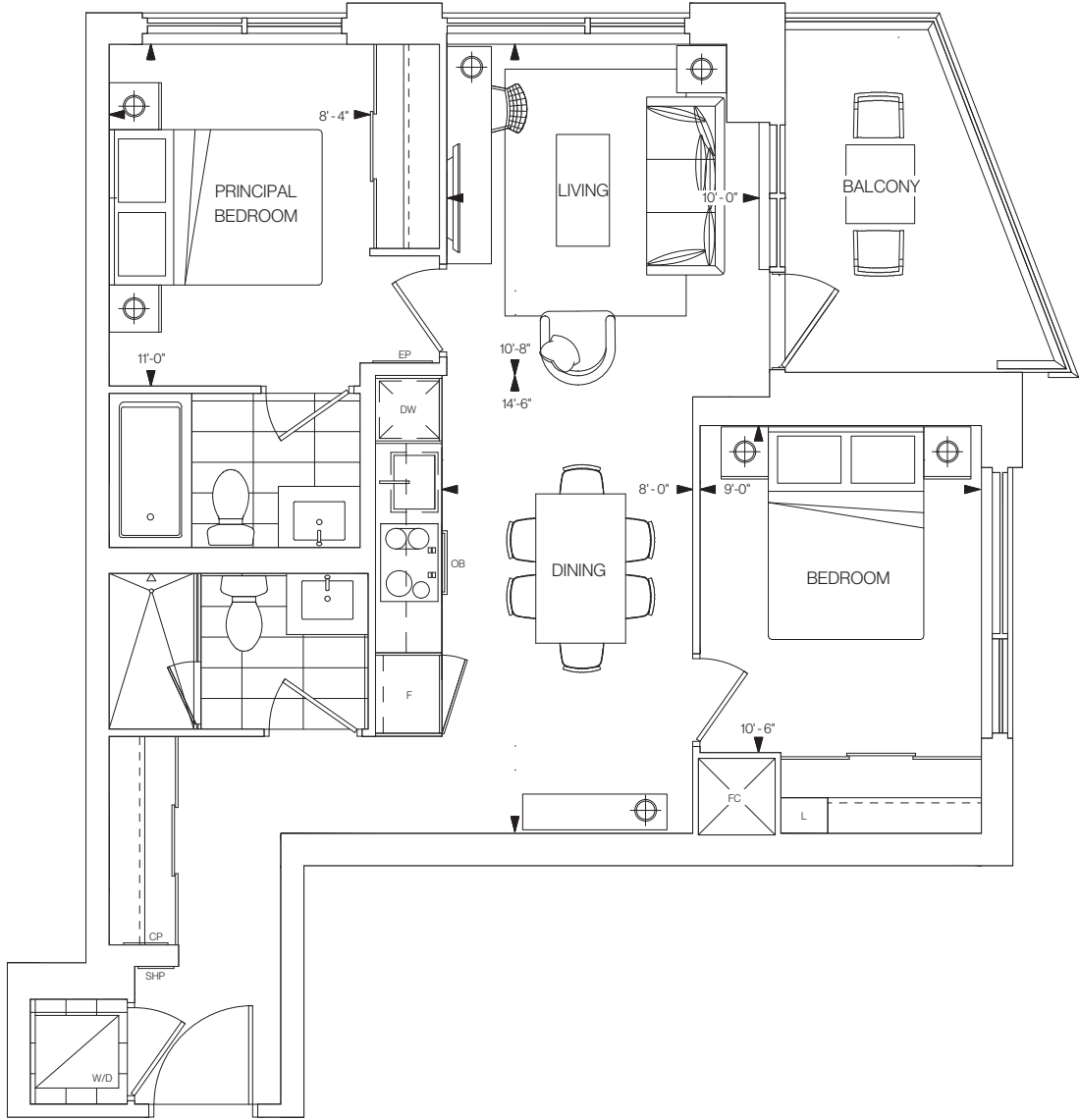
681 SQ.FT.
2 BEDROOMS 2 BATHROOMS
EAST FACING

FLOORS 6-27



©Tridel 2021. ®Tridel, "D" design, Tridel Built for Life and Tridel Built for Life Design are registered Trademarks of Tridel Corporation. Project names and logos are Trademarks of their respective owners. All rights reserved. Buildings and views not to scale. All dimensions are approximate and subject to normal construction variances. Dimensions may exceed the usable floor area. Sizes and specifications subject to change without notice. Actual usable floor space may vary from the stated floor area. Furniture is displayed for illustration purposes only and does not necessarily reflect the electrical plan for the suite. Suites are sold unfurnished. Balcony, terrace and façade variations may apply, contact a sales representative for further details. Illustrations are artist's concept only. Prices and specifications subject to change without notice. E.&O.E. October 2021.

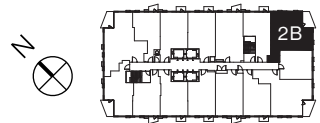
WESTERLY 2



2B

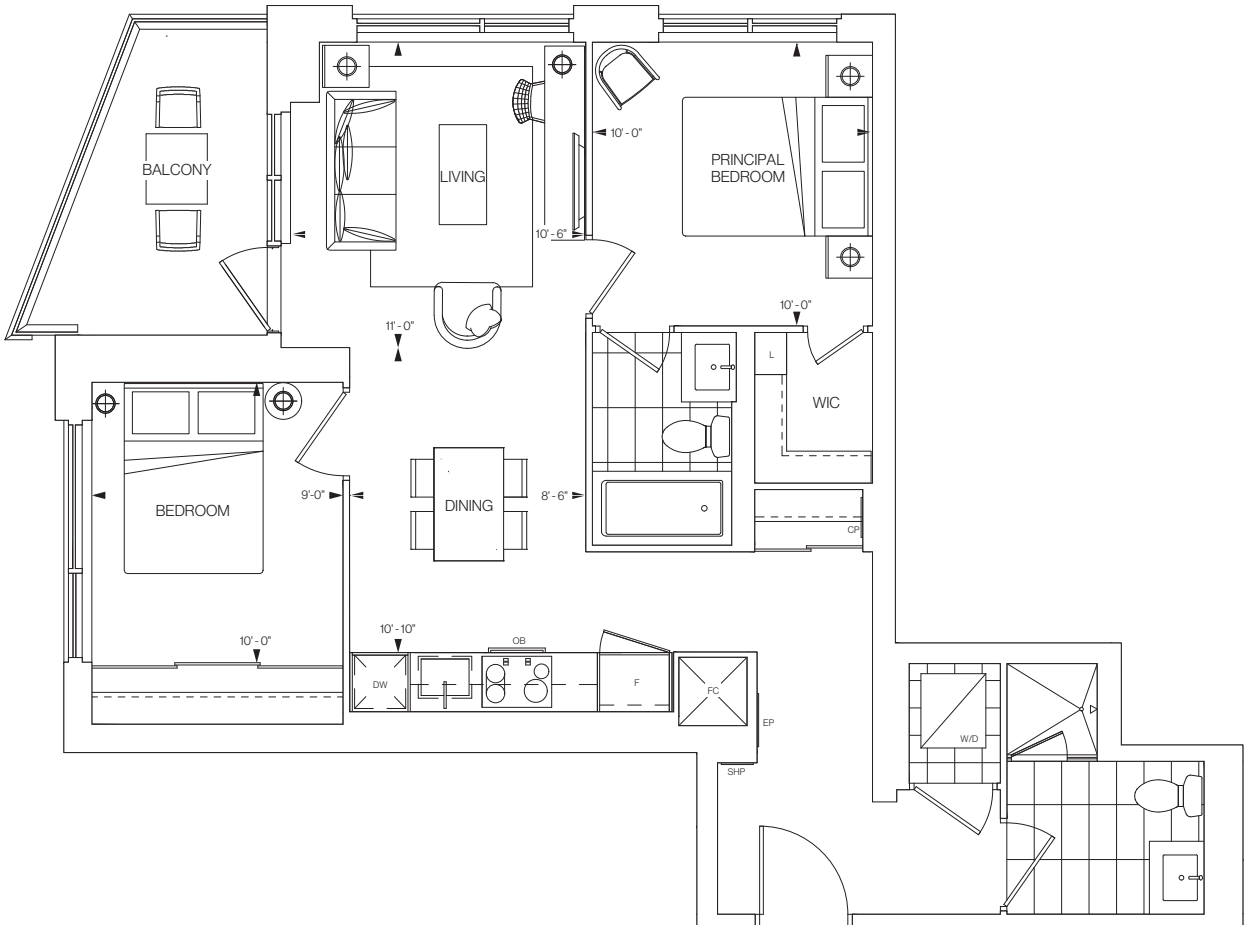
772 SQ.FT.
2 BEDROOMS 2 BATHROOMS
SOUTHEAST FACING

FLOORS 6-20



©Tridel 2021. ®Tridel, "D" design, Tridel Built for Life and Tridel Built for Life Design are registered Trademarks of Tridel Corporation. Project names and logos are Trademarks of their respective owners. All rights reserved. Buildings and views not to scale. All dimensions are approximate and subject to normal construction variances. Dimensions may exceed the usable floor area. Sizes and specifications subject to change without notice. Actual usable floor space may vary from the stated floor area. Furniture is displayed for illustration purposes only and does not necessarily reflect the electrical plan for the suite. Suites are sold unfurnished. Balcony, terrace and façade variations may apply, contact a sales representative for further details. Illustrations are artist's concept only. Prices and specifications subject to change without notice. E.&O.E. October 2021.

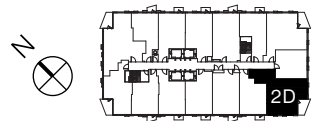
WESTERLY 2



2D

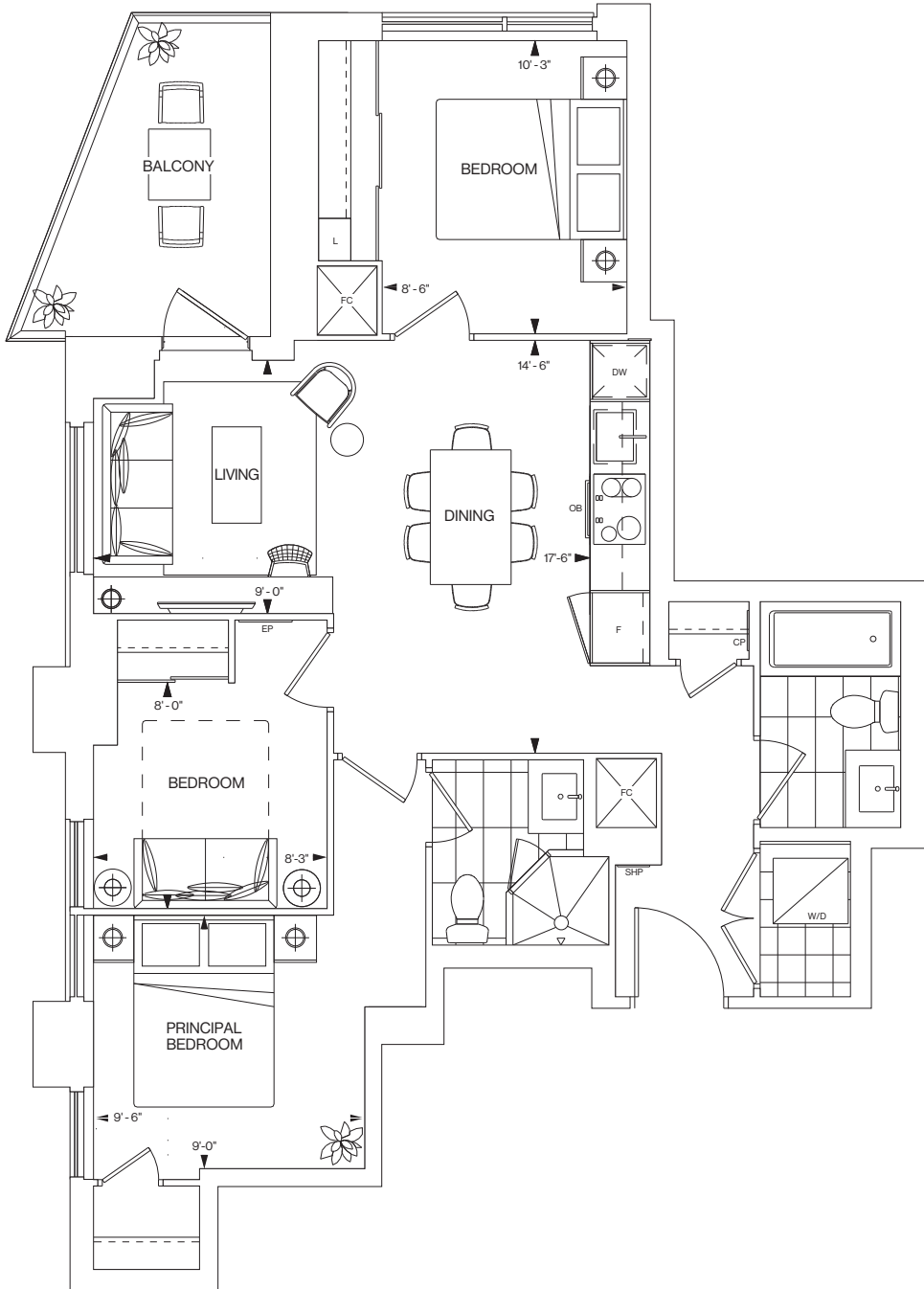
834 SQ.FT.
2 BEDROOMS 2 BATHROOMS
SOUTHWEST FACING

FLOORS 6-20



©Tridel 2021. ®Tridel, 'D' design, Tridel Built for Life and Tridel Built for Life Design are registered Trademarks of Tridel Corporation. Project names and logos are Trademarks of their respective owners. All rights reserved. Buildings and views not to scale. All dimensions are approximate and subject to normal construction variances. Dimensions may exceed the usable floor area. Sizes and specifications subject to change without notice. Actual usable floor space may vary from the stated floor area. Furniture is displayed for illustration purposes only and does not necessarily reflect the electrical plan for the suite. Suites are sold unfurnished. Balcony, terrace and façade variations may apply, contact a sales representative for further details. Illustrations are artist's concept only. Prices and specifications subject to change without notice. E.&O.E. October 2021.

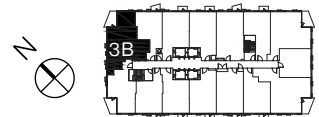
WESTERLY 2



3B

872 SQ.FT.
3 BEDROOMS 2 BATHROOMS
NORTHEAST FACING

FLOORS 6-23



©Tridel 2021. ®Tridel, "D" design, Tridel Built for Life and Tridel Built for Life Design are registered Trademarks of Tridel Corporation. Project names and logos are Trademarks of their respective owners. All rights reserved. Buildings and views not to scale. All dimensions are approximate and subject to normal construction variances. Dimensions may exceed the usable floor area. Sizes and specifications subject to change without notice. Actual usable floor space may vary from the stated floor area. Furniture is displayed for illustration purposes only and does not necessarily reflect the electrical plan for the suite. Suites are sold unfurnished. Balcony, terrace and façade variations may apply, contact a sales representative for further details. Illustrations are artist's concept only. Prices and specifications subject to change without notice. E.&O.E. October 2021.